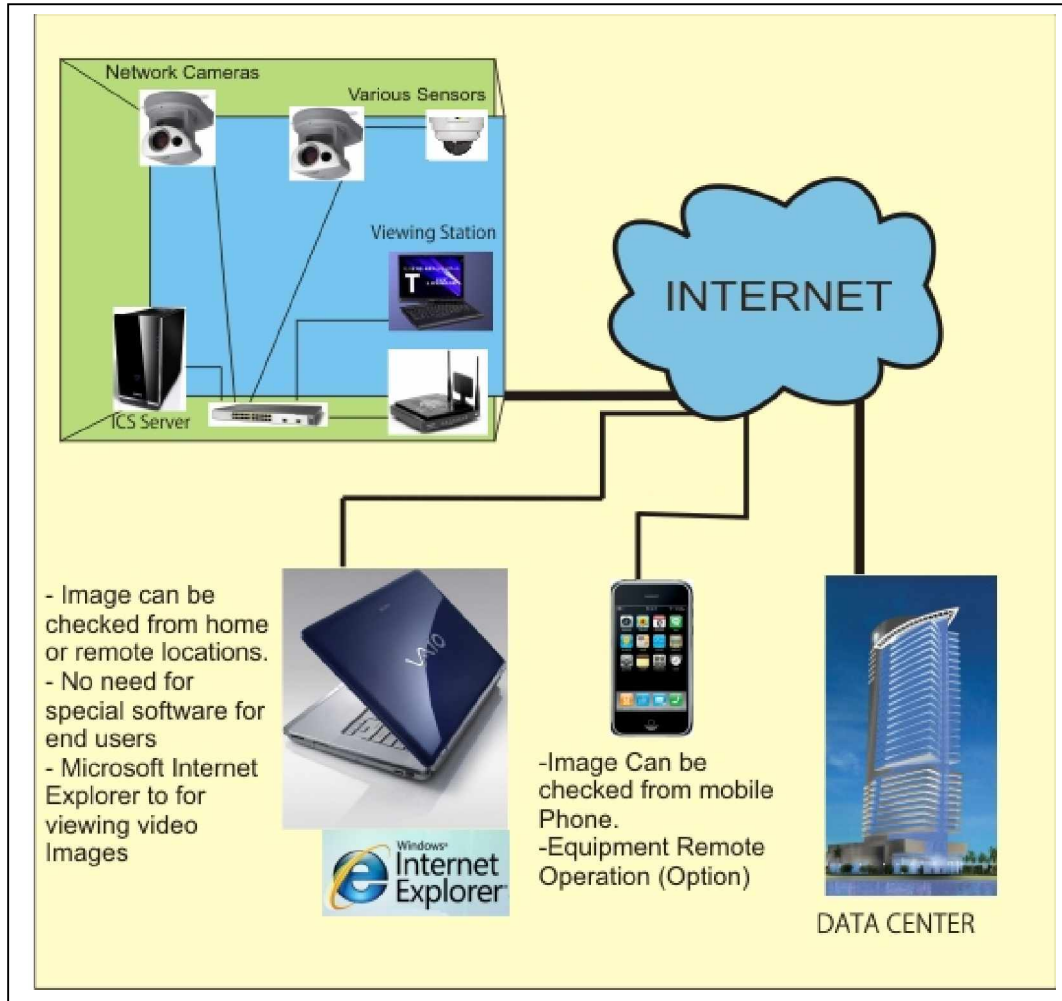


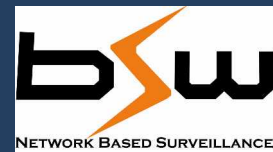
The ICS Corporate model is specifically designed for very large installations that need a robust dual server storage and surveillance software with extensive functionality. ICS Corporate supports a large number of remote cameras with a local and centralized server.



Key feature:

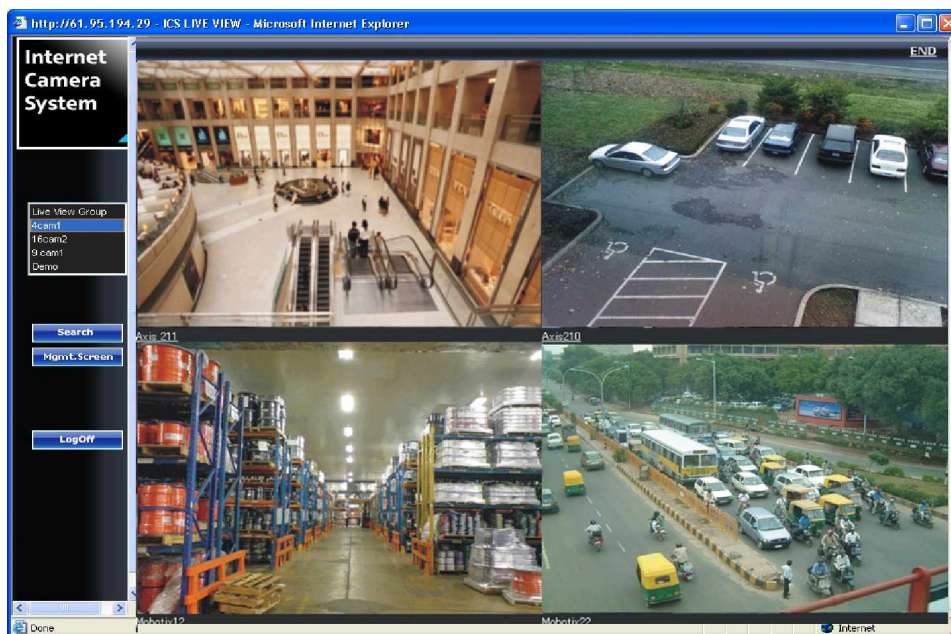
- ✓ Choice of camera: Compatible with a wide variety of different IP-based video camera and encoder products (MJPEG and MPEG4) such as Axis, ACTi, Sony, Panasonic, Mobotix and Vivotek.
- ✓ Dependable, robust and stable: Proven in daily operation in more than 350 Customer installations (2500 cameras) in Japan.
- ✓ High performance: Achieved on standard computer equipment by utilizing powerful Linux technology.
- ✓ Remote access: Access your video surveillance data from any location at any time using a desktop computer or laptop, Mobile or any device with internet access.
- ✓ Export material: Deliver authentic video proof to public authorities or for internal investigations.
- ✓ The Future: The IP approach is the foundation of tomorrow – available today. Ongoing product enhancements give you long-term returns on your surveillance investment.

IP CAMERA SYSTEM



SYSTEM, ADMINISTRATION & INTEGRATION

- ✓ Dual-server video surveillance solution: Recording of MJPEG video from Internet Protocol (IP) cameras and from IP video encoders using analog cameras are stored on both local and centralized servers.
- ✓ Single-server at Local locations: Supports up to 50 cameras with continuous recording or recording activated by motion/ event with speed up functionality. Servers can be added as the numbers of cameras are increased.
- ✓ Login Information: ICS will continuously save all Successful/Failed login attempts into the system log along with the IP addresses.
- ✓ Centralized Server: Customized server configuration depending on the number of remote locations and the number of cameras. Recorded data from the remote servers will be sent to the centralized server ensuring redundancy of data. Servers can be added as the numbers of cameras are increased.
- ✓ Authorization: ICS administrator can assign the authorization of users.
- ✓ Alerts: Notify users on event or motion detection by sound using an external alarm device.



SEARCH, EXPORT & SECURE DATA

- ✓ Pre and Post recording: Recording triggered by motion detection can be preset to record for a specified time period before and after sensor reaction.
- ✓ Recording export: JPEG
- ✓ Authentication: There are three types of users: ICS administrator, local administrator and regular user. Each type of user will have different access rights and privileges.

REMOTE OPERATIONS

- ✓ **Live View and playback:** From a remote web-based or local client at a time supporting up to 100 cameras.
- ✓ **Advanced views layout:** Work with shared server-stored camera views containing up to 4x4 layouts.
- ✓ **Intelligent PTZ:** Manual control, presets and joystick control.
- ✓ **Input/output Event Control:** Via cameras or networked I/O devices for event control, manual event buttons and event list in recordings.
- ✓ **Single-channel audio:** Listen-in on the live audio.

ICS APPLICATION SERVER

- ✓ Simultaneous digital multi-channel video.
- ✓ Connectivity to cameras and video encoders supports both MJPEG and MPEG4.
- ✓ Up to 100 installed cameras with simultaneous recording and live view.
- ✓ Recording technology: secure high speed database holding JPEG images.
- ✓ Recording speed: 30+ frames per second per camera, limited only by hardware.
- ✓ Recording quality depends entirely on camera capabilities.
- ✓ Unlimited software recording capacity only limited by available hard drive space
- ✓ Daily archiving possible.
- ✓ Recording Server is run on a dedicated Linux server.
- ✓ PTZ preset positions.

ICS LIVE VIEW

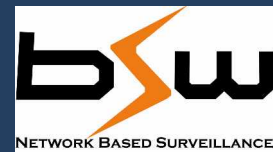
Live View includes all the features of the Camera plus more:

- ✓ Local live video viewing.
- ✓ Single-channel audio listen-in with mute function.
- ✓ Dual computer monitor viewing with Hotspot window.
- ✓ View up to 16 cameras simultaneously.
- ✓ Viewing speed: 30+ frames per second per camera, limited only by hardware.
- ✓ Quick Browse function to playback latest recorded video.
- ✓ Activate output signals on camera or dedicated devices.
- ✓ Option to hide Administrator button from other users.
- ✓ Take manual control over a PTZ camera.
- ✓ Joystick functionality for supported cameras.

RECORDING VIEWER

- ✓ Playback recorded video from the ICS Server.
- ✓ Scrollable activity timeline and generation of sensor graph on a monthly, daily basis.
- ✓ Instant search on recordings based on date/time and activity/alarm (Video Motion Detection).
- ✓ Evidence can be generated as a printed report with time and date stamp, as a JPEG image.
- ✓ De-interlacing of video from analog cameras.

IP CAMERA SYSTEM



HTTP SERVER / REAL-TIME FEED SERVER

- ✓ Remote access from web browser without installing any client software.
- ✓ View live video or playback recordings.
- ✓ Authenticate access based on user name and password.
- ✓ Authorize access either as 'Anonymous', 'Predefined user only' with full access to all cameras, or 'Restrict user access by camera'.
- ✓ Audit logs of client logins by time and cameras.

REMOTE CLIENT

- ✓ View live video or playback recordings.
- ✓ Advanced video navigation including fast/slow playback, jump to date/time, single step and video motion search.
- ✓ Individual views can be user-defined in various layouts
- ✓ Import static or active HTML maps for fast navigation to cameras and good premise overviews.
- ✓ Control output port relay operation, like control of gates.
- ✓ Quick overview of sequences with detected motion and preview window.
- ✓ Quick overview of events/alerts.
- ✓ Control PTZ cameras remotely, also using preset positions.
- ✓ Remote PTZ Point-and-Click control.
- ✓ Optional video compression in streaming from camera to client gives better use of bandwidth.
- ✓ Export JPEG images.
- ✓ System logon using ICS user name and password.

MINIMUM SYSTEM REQUIREMENTS:

ICS Central Server: Customized server specifications depending on the number of remote cameras and installations.

ICS Server 1.0.4(local):

1. CPU: Dual core 1.8 GHz or above (AMD or Intel).
2. RAM: Minimum 1GB (2 GB or more recommended).
3. Network: 2 x Ethernet (1 Gbit recommended).
4. Hard disk type: E-IDE, PATA, SATA, SCSI, SAS (7200 RPM or faster).
5. Hard disk space: Minimum 160 GB free (depends on number of cameras and recording settings).
6. OS: Red Hat Linux ES4 or equivalent.



Client:

1. CPU: Intel Pentium 4 or higher, minimum 2.4 GHz.
2. RAM: Minimum 256 MB (512 MB recommended for larger views).
3. Network: Ethernet (100 Mbit or higher recommended).
4. Graphics Card: AGP or PCI-Express, minimum 1024 x 768 (1280 x 1024 recommended), 16 bit colors.
5. OS: Microsoft Windows 2000 Professional, Windows 2000 Server and Advanced Server, Windows XP Professional (32 and 64 bit) and Windows Server 2003 (32 and 64 bit), Windows Vista Business (32 bit), Windows Vista Enterprise (32 bit) and Windows Vista Ultimate (32 bit).



IP CAMERA SYSTEM



SUPPORTED LANGUAGES: English

Centralized Server License:

Mandatory for installing the product and covers installation on an unlimited number of computers using the same Software License Code and designated as Master Servers or Slave Servers.

Local Server License:

Mandatory for installation of the server software at the local location.

The Local Server License includes the Software server License, and unlimited local or remote user access.

Camera License:

A camera license is required for each connected camera, either directly or per video channel through a video encoder or DVR. Camera Licenses can be purchased in any numbers.

Client: No license required as client side is completely web based.

COMPANY PROFILE

BSW Soft is a global software solution company for IP Camera Implementation, Integration, customization and software development service provider.

Combining engineering talent with product specific processes, BSW Soft builds specialized teams with varied proven expertise, to deliver the complete solution life cycle, from concept through product realization to post-implementation support.

BSW Soft has a strategic off shore development centre in the IT capital of India (Bangalore) and a branch office at Tokyo, Japan.

PRODUCT RANGE

PROFESSIONAL MODEL:

This model will be an ideal network surveillance camera for shop, factory, and financial institution. This system facilitates a local PC to save and browse the images by accessing the Base Administration Server on the intranet LAN environment.

ENTERPRISE MODEL:

Convenient and easy monitoring of remote cameras that are located at multiple locations, with one centralized server at the head office. Users can view camera images stored in data center through the internet.

CORPORATE MODEL:

Convenient and easy monitoring of camera images stored at the data center and Base Administration Server. Retrieval of images will not be disrupted even if internet connection blocked. 48 hours of image is being saved on a constant basis on the Base Administration Server and the images will be transmitted to data center once the internet connection is up.